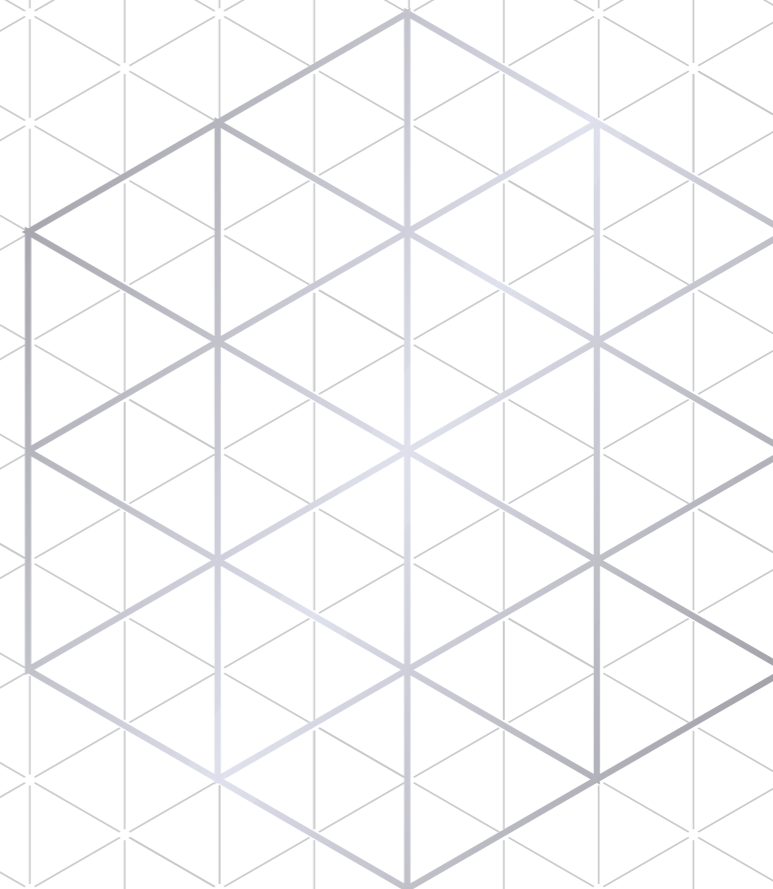


SANRITSU CORPORATION
2-12-32 Konan, Minato-ku, Tokyo 108-0075
Phone: +81-3-3471-0011 Fax: +81-3-3471-1464
<https://www.srt.co.jp/>



SANRITSU

All logistics begins with packaging.



corporate profile



All logistics begins with packaging

Packaging is a vital process that plays a major role in the quality of logistics services — affecting everything from size and weight to transport costs and lead time.

That's why SANRITSU puts its packaging business, driven by sophisticated technologies, at the heart of everything it does. Whether it's our warehousing services, which are backed by conveniently located, fully-featured facilities and equipment, or our transport services, in which we pride ourselves on exceptional speed and safety, we offer premium, total logistics solutions that stretch across Japan and around the globe.

We will continue to meet our customers' true needs head-on, challenging ourselves to offer logistics services with value that exceeds expectations.

Packaging Services

Our original design and professional packaging provides the ideal solutions to customer needs.



Packaging solutions of all shapes and sizes

Steel packaging



- Skids (bottom portion) are sixteen times stronger than wood
- Cost can be lower than wooden boxes by reducing volume

Wooden boxes (lumber/plywood)



- Can be made from 100% plywood, eliminating the need for fumigation or heat treatment
- Can be used with a barrier to keep out moisture and humidity

Wooden crates



- Lightweight solution-ideal for land/air transport
- Can be more cost effective than wooden boxes

Wooden boxes (lumber/cardboard)



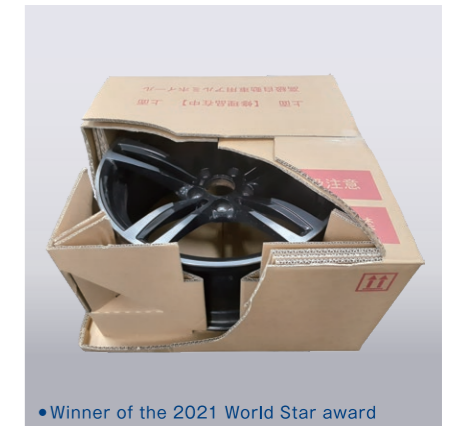
- Reduced weight ideal for land/air transport
- Cardboard hides package contents

Reinforced cardboard boxes



- Lightweight packaging reduces air transport costs
- Eliminates the need for fumigation or heat treatment

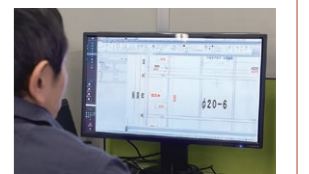
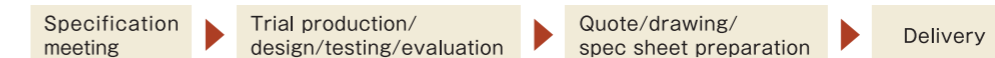
<One of our customer solutions>



- Winner of the 2021 World Star award
- Aluminum wheel packing box to shorten paint drying time
 ▶ Makes it possible to pack and ship without waiting for paint to dry, contributing to shorter lead time ▶ Makes it possible to change specifications to packing methods that use corner fixed materials and spacers, thereby reducing cushioning materials and spacers

From order to delivery

We design custom packaging shapes and specifications to match the shape and special characteristics of individual products so that our customers get exactly what they need.



Awards

World Star award/ Technical Packaging Award/ METI Environmental Bureau Director-General's Award/ Large and Heavy Packaging Division Award/ Logistics Award, and more



Warehousing Services

Sophisticated warehouses that meet a variety of needs, developed with customer convenience in mind every step of the way.



Domestic Network

Shiroishi Office

Total floor area: 1,350m²
Floor load: 0.7t/m²
Equipment: Fully air-conditioned

Koriyama Office

Building #1
Total floor area: 1,302m²
Floor load: 0.7t/m²
Building #2
Total floor area: 5,610m²
Floor load: 1F 2t/m², 2F-4F 1t/m²
Equipment: Freight elevator (2t), passenger-freight elevator (3t), table lifters (1t, 3t), fully air-conditioned

Tsukuba Office

Total floor area: 6,127m²
Floor load: 1.5t/m²
Equipment: Dock leveler, seismic isolator

Hachioji Office / Saitama Group

Total floor area: 10,723m²
Floor load: 0.7t/m²
Equipment: Freight elevator (1.5t), table lifter (3t), fully air-conditioned

Murayama Office

Total floor area: 9,664m²
Floor load: 1F 1.5t/m², 3F-4F 1t/m²
Equipment: Freight elevator (3t), overhead crane (2.8t), fully air-conditioned

Toyama Office

Hachioji Office

Total floor area: 16,491m²
Floor load: 1F 1.8t/m², 3F-4F 1.5t/m², 5F 1.2t/m²
Equipment: Freight elevator (3t), overhead crane (2.8t), fully air-conditioned

Toyoda Office

Keihin Office

Total floor area: 26,423m²
Floor load: 1.5t/m²
Equipment: Freight elevator (3t), dock leveler, fully air-conditioned, seismic isolator, emergency generator, 24-hour mechanical security, security cameras, partially bonded warehouse

Yokohama Office

Total floor area: 5,049m²
Equipment: Freight elevator (8t), overhead cranes (40t, 20t, 7.5t, 2.8t), forklift (28t), comprehensive bonded area

*Note: We have other facilities and equipment's in addition to those listed here. Please Contact the associated business division for details.



28-ton forklift for heavy cargo



Emergency generator ensures a stable supply of electricity



Height-adjustable dock leveler

Narita Office No.1 Warehouse

Building #1
Total floor area: 3,456m²
Floor load: 1F 1.5t/m², 2F 1t/m²
Equipment: Freight elevator (3t), table lifters (1t, 3t), fully air-conditioned

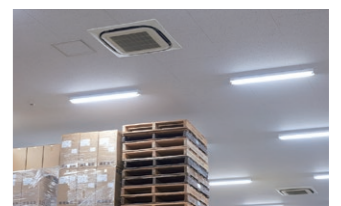
Building #2
Total floor area: 12,007m²
Floor load: 1F 1.5t/m², 2F 1t/m²
Equipment: Freight elevators (2t, 3t), overhead crane (1t), fully air-conditioned, partially bonded warehouse

Narita Office No.2 Warehouse

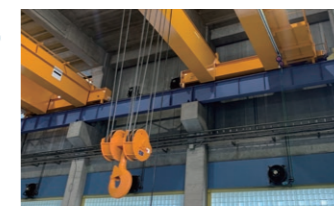
Total floor area: 13,896m²
Floor load: 1F 1.5t/m², 2F-3F 1t/m²
Equipment: Freight elevator (3t), overhead crane (2.8t), table lifter, explosive detector, fully air-conditioned 2F/3F, emergency generator, partially bonded warehouse



High-visibility lighting improves work efficiency



Air conditioning systems improve quality and comfort



Two 40-ton cranes, which are few in number at the Port of Yokohama

Head Office

Warehouse Operations

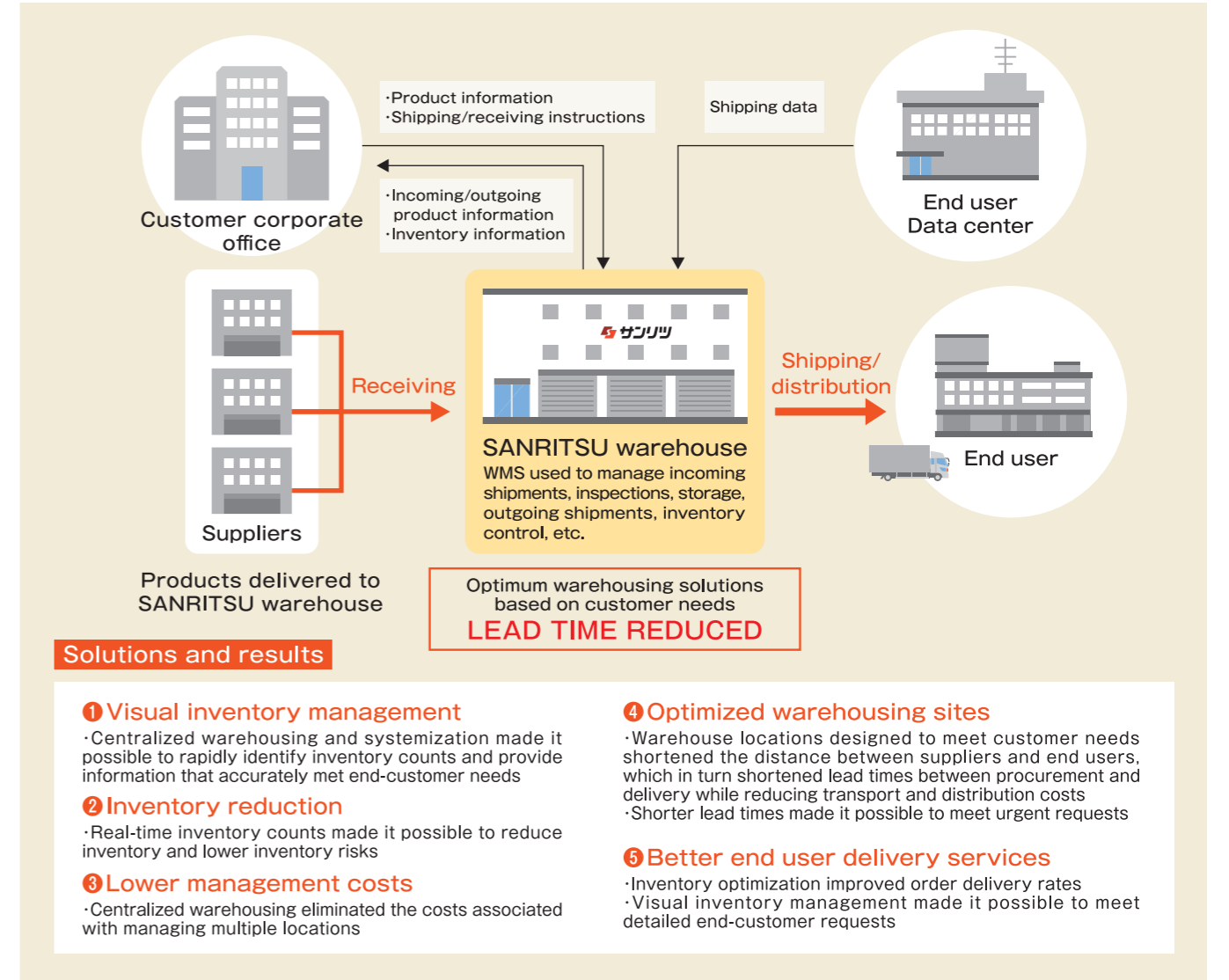
Offering the ultimate logistics solutions to power your business.



One of our customer solutions

Centralized operations center leads to major cost reductions for a Japanese trading company

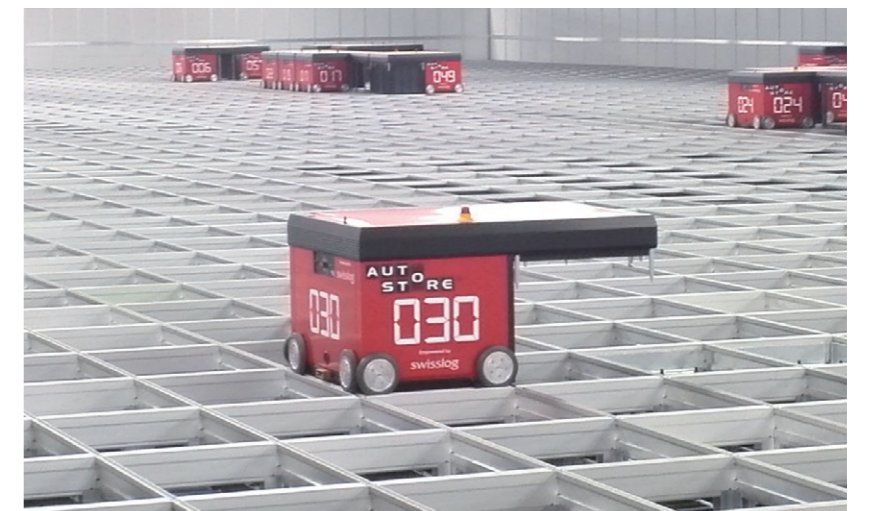
Customer issues 1. Problems associated with storage at multiple warehouses
2. Ballooning management costs 3. Defects resulting from warehouse site conditions



Manpower reduction initiatives

We're constantly striving to improve work efficiency and productivity by introducing materials handling equipment tailored to customer needs.

Autostore:
an automatic, robot-controlled picking system ▶



Transportation Services

Faster. Cheaper. Once it's packed,
we'll get it there in a flash.



Flexible dispatching system

We've adopted a vehicle dispatch support system that uses transport data like cargo descriptions, running distance, and running time to put together optimized vehicle fleets that increase customer satisfaction through accurate information and dispatch planning.



Customer advantages

More efficient
work for shorter
delivery
times

Less working
hours for
lower costs

Prevents
misdelliveries
for better
service
quality

Safety initiatives

- Active driver education
- Joint safety countermeasure meetings with shipping partners
- Educational activities and sharing "near miss" cases
- Systematic driver aptitude assessments
- Health checkups and health management



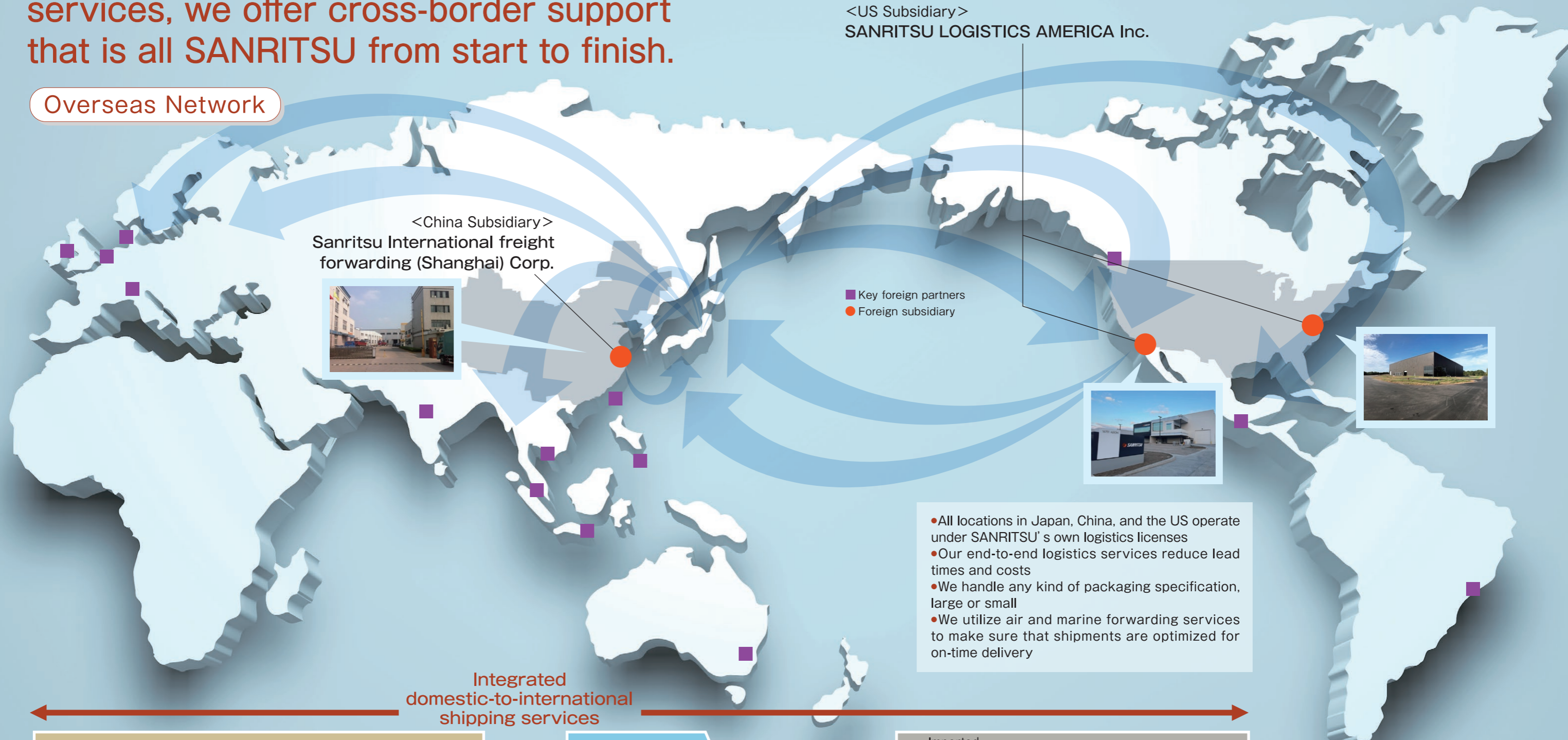
◀ Transport Division
(Hachioji and elsewhere)



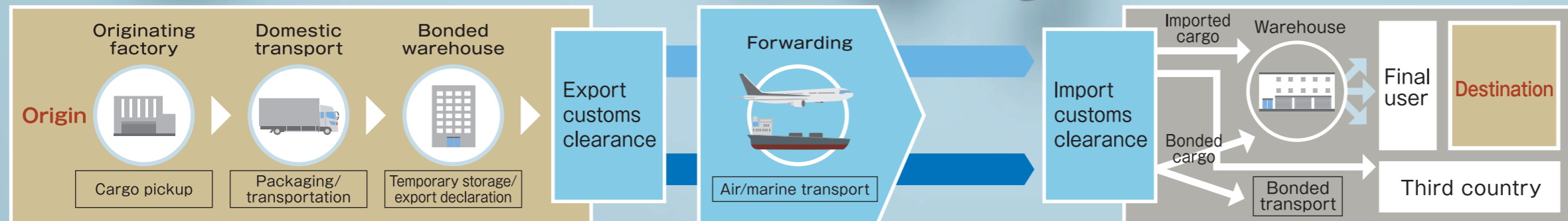
Global Logistics

From factory pickup to local delivery services, we offer cross-border support that is all SANRITSU from start to finish.

Overseas Network



Integrated domestic-to-international shipping services



Message from the president

We at SANRITSU have been packaging experts since our company was founded seventy years ago — which means that we are in the business of protecting our customers' treasure.

We've kept our commitment to keep valuable items safe even as we've expanded into more business areas, working to provide a variety of customer-focused services day after day.

Our global economy is undergoing drastic change even as customer needs diversify and business becomes more international in scope. Navigating these shifts requires that we become even more diverse and specialized in the kinds of logistics services that we provide.

We will continue to build on our sophisticated packaging technologies as we branch out to deliver end-to-end support in all of our land, marine, and air logistics services — whether domestic or international — that meet our customers' high expectations.

We will also continue to keep an open dialogue with our clients about ways we can make our logistics services even more efficient, actively seeking out what customers truly need and coming up with the solutions that move their businesses forward.

In the process, we will strive to both earn our customers' trust and do our part to make the world a better place.

We strive to be a company that is attractive — not only by fulfilling our corporate social responsibilities, but by aiming to provide kind and compassionate logistics services that take the environment into account as well. We are working day in and day out to fulfill our role as logistics professionals with extensive knowledge of our customers and a variety of other industries so that we may be the logistics partner of choice for our clients.

President and Representative Director
Yasuhide Miura



Company Overview

Company Name

SANRITSU CORPORATION



Established

March 27, 1948

Key Business Areas

- Crating and packaging
- Truck transportation
- Warehouse storage and cargo handling
- Bonded cargo handling and customs clearance
- IATA operation (air) and NVOCC operation (marine)

We offer comprehensive logistics solutions for our customers that are rooted in our packaging operations and extended through transport, warehousing, and more.

We make use of our extensive experience to offer total logistics support, particularly in handling medical equipment and precision instruments and machines.

Listing

Tokyo Stock Exchange Standard Market
(security code: 9366)

< The SANRITSU Group Companies >

● CHIBASANRITSU KONPO UNYU CORPORATION

Southport Shinagawa
2-12-32 Konan, Minato-ku, Tokyo 108-0075

Operations centers

Ichihara Office Production Center

(Inside the Nippon Sheet Glass Co., Ltd. Chiba Office)
6 Anesaki-kaigan, Ichihara, Chiba Prefecture

Ichihara Office Packaging Center

546 Toyonari, Ichihara, Chiba Prefecture

● Sanritsu International freight forwarding (Shanghai) Corp.

Building 1-2, No.1185, Xiang Jiang Road
Nan Xiang Town, Jia Ding District, Shanghai, China

● SANRITSU LOGISTICS AMERICA Inc.

16701 Aston Street, Irvine, CA 92606

Operations centers

North Carolina Branch

120 South Technology Dr. Reidsville, NC 27320

Our Management Philosophy

Achieving higher-quality operations is at the heart of everything we do as we strive to create a more prosperous world by respecting our customers' wishes and continuing to provide them with the premium logistics services.

We want SANRITSU to be known as an attractive company.

Our Vision

From operations to solutions

Basic Sustainability Policy

With the corporate philosophy of "Aiming to Become a Beautiful, Appealing Company" in mind, the Sanritsu Group will sincerely execute business activities to contribute to the sustainable growth of society.

- 1 We strengthen our corporate governance to "improve management quality."
- 2 We create new value as a provider of logistics solutions.
- 3 We promote diversity and inclusion in respect for the human rights of all people.
- 4 We realize a safe, secure, and decent work environment.
- 5 We ensure active communication with stakeholders including customers, employees, shareholders, and local communities to "improve our logistics quality."

Our Commitment to Quality

Every one of our employees strives daily to eliminate accidents and improve the quality of their work, engaging each task with purpose and constantly endeavoring to improve quality while increasing their awareness to maintain a zero-accident record. Quality management teams throughout the company also gather regularly to carry out activities designed to achieve even better logistics quality.

Environmental Initiatives

Our efforts to conserve the environment and reduce costs through our logistics activities include reorganizing warehouse layouts to improve work processes and reduce energy usage by boosting efficiency and actively working to reuse wood, cardboard, and other materials.